

PART OF THE SW. 1/4, OF SECTION 15, PT SECTION 16, T.6N., R.2W., S.L.B. & M.

823

RIVERBEND FARMS PHASE 1

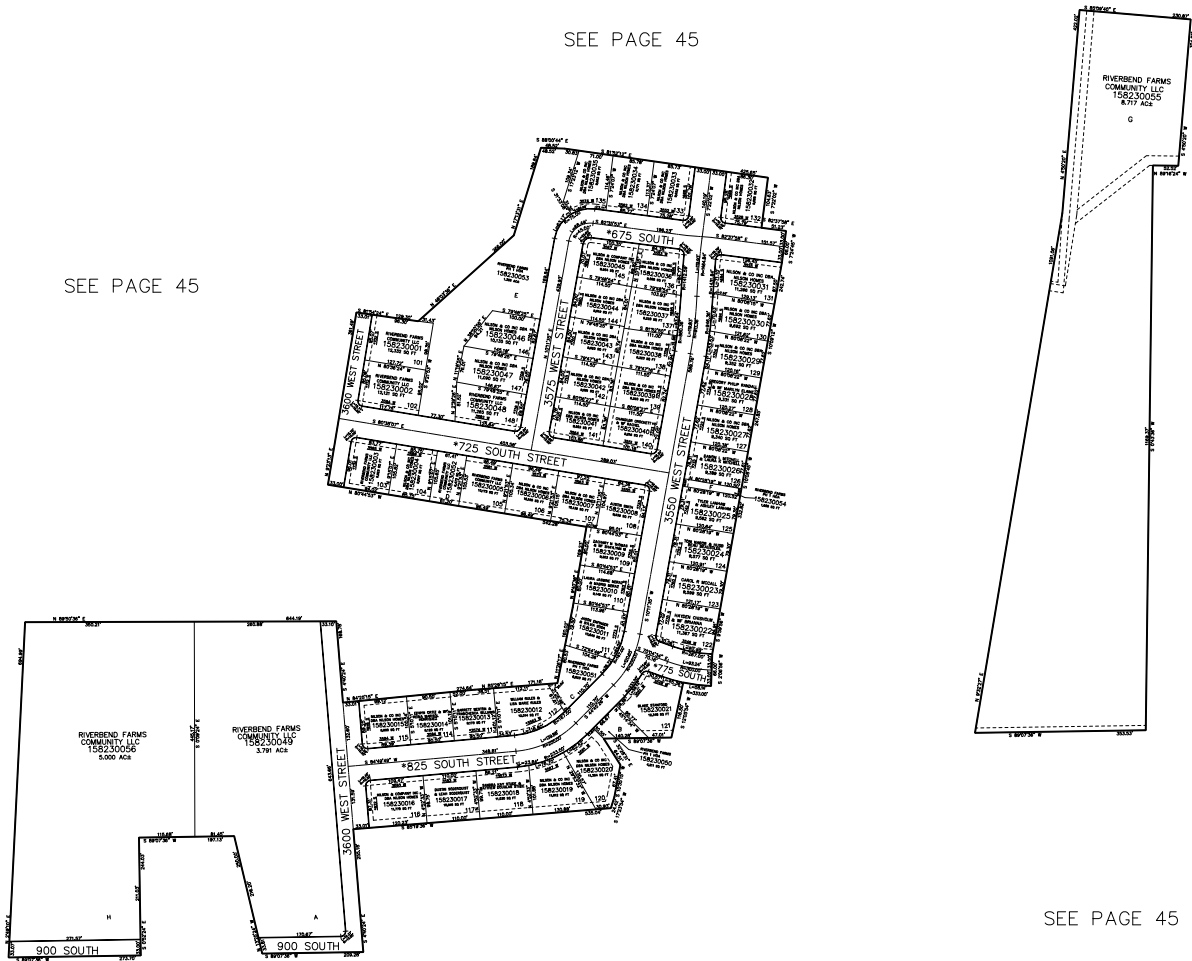
IN WEBER COUNTY

TAXING UNIT: 514

SCALE 1" = 200'

SEE PAGE 45

SEE PAGE 45



SEE PAGE 45

10' UTILITY & DRAINAGE EASEMENTS EACH
SIDE OF PROPERTY LINES AS INDICATED
BY DASHED LINES EXCEPT AS OTHERWISE
SHOWN.

FOR COMPLETE SURVEY DATA SEE
ORIGINAL DEDICATION PLAT IN
BOOK 96, PAGE 9-10 OF RECORDS.

*AFFIDAVIT OF ADDRESS E#3300149, E#3306716, 3318289, 3330459